

Funciones exponenciales

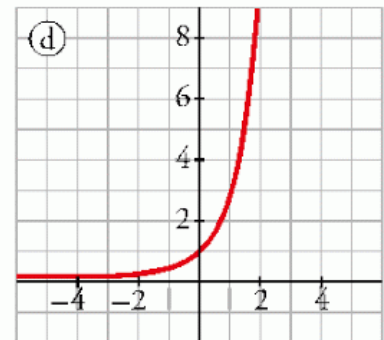
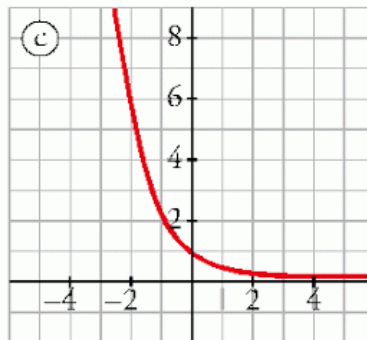
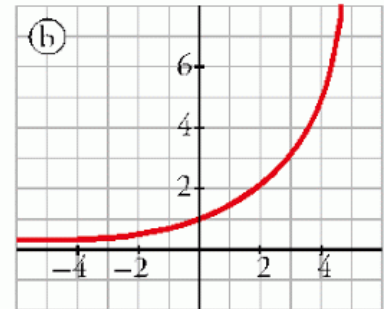
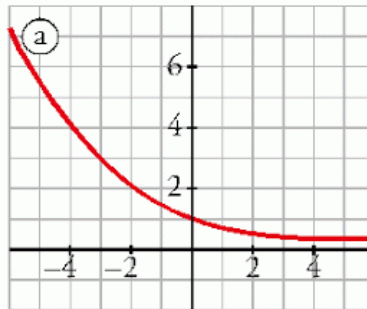
Asocia cada gráfica con su función:

I) $y = 3^x$

II) $y = 1,5^x$

III) $y = 0,4^x$

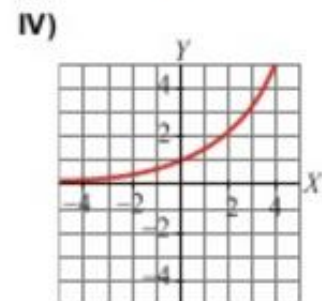
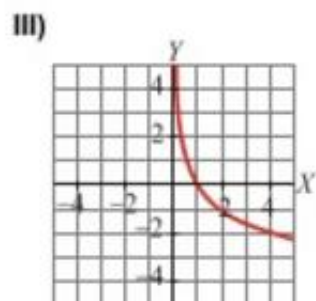
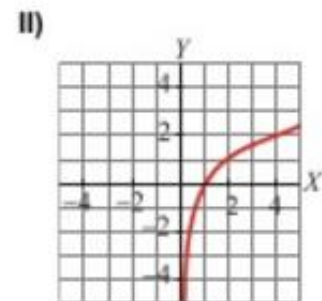
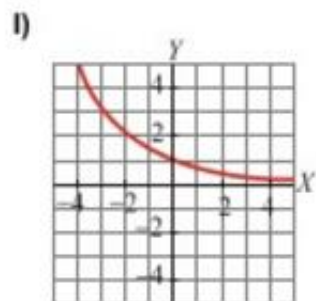
IV) $y = 0,7^x$



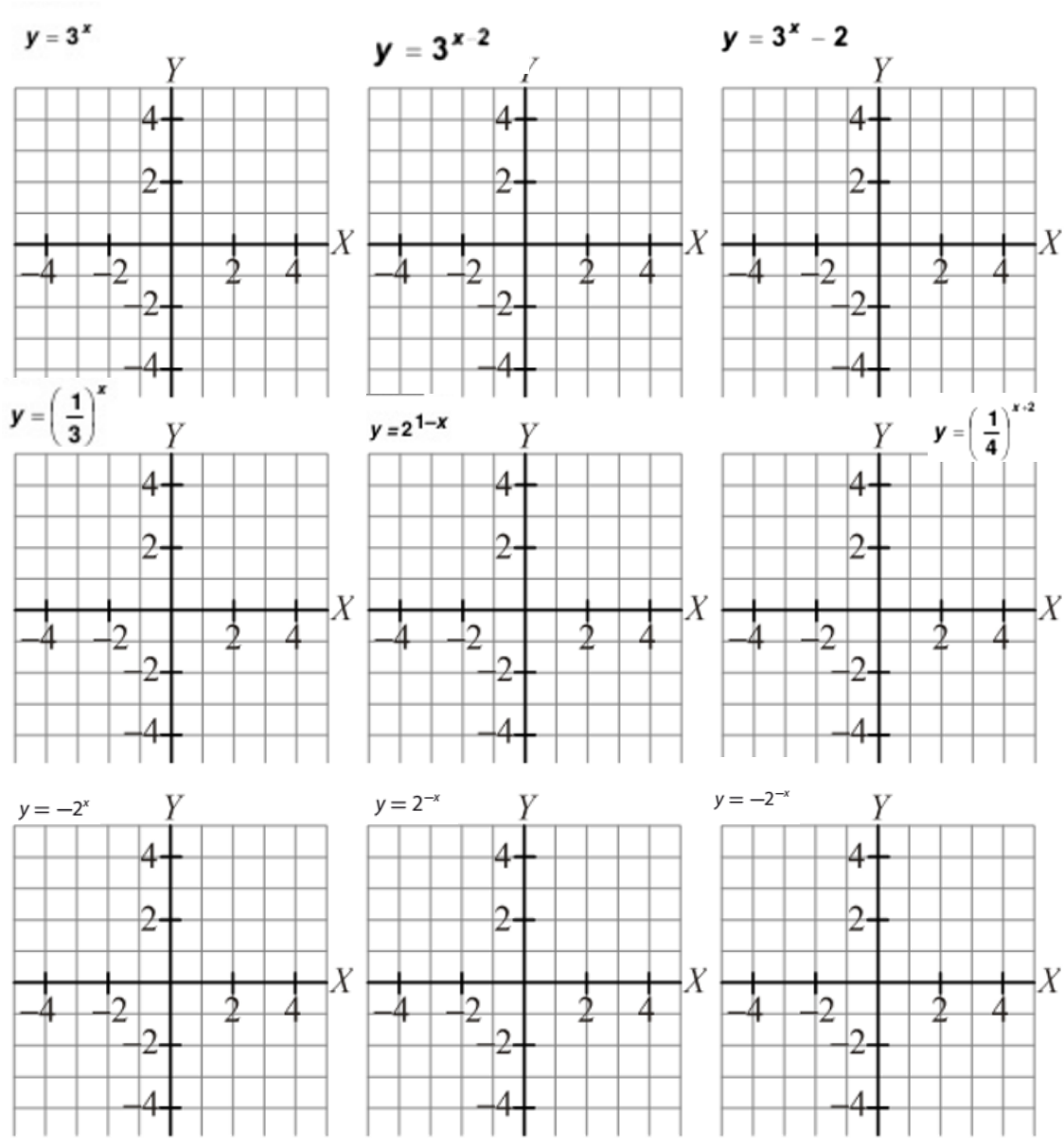
Asocia a cada gráfica su ecuación:

a) $y = \left(\frac{2}{3}\right)^x$

b) $y = \left(\frac{3}{2}\right)^x$



Dibuja las funciones que se indican:



Identifica las funciones Gris y sus traslaciones Roja, Verde y Azul

